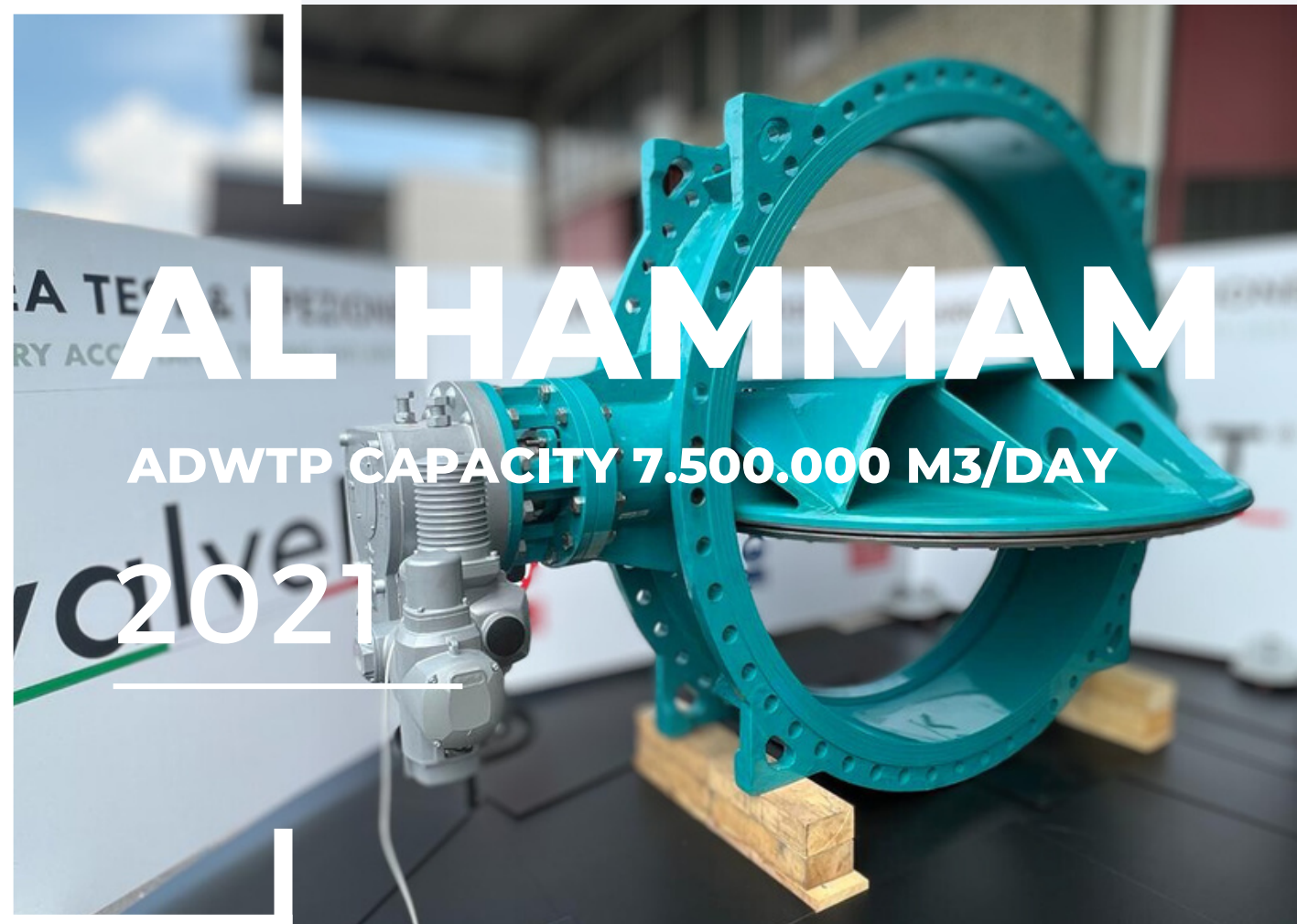




valveIT[®]

Via Caduti di Reggio Emilia 27, 40033
Casalecchio di Reno (BO)
www.valveit.com
info@valveit.com



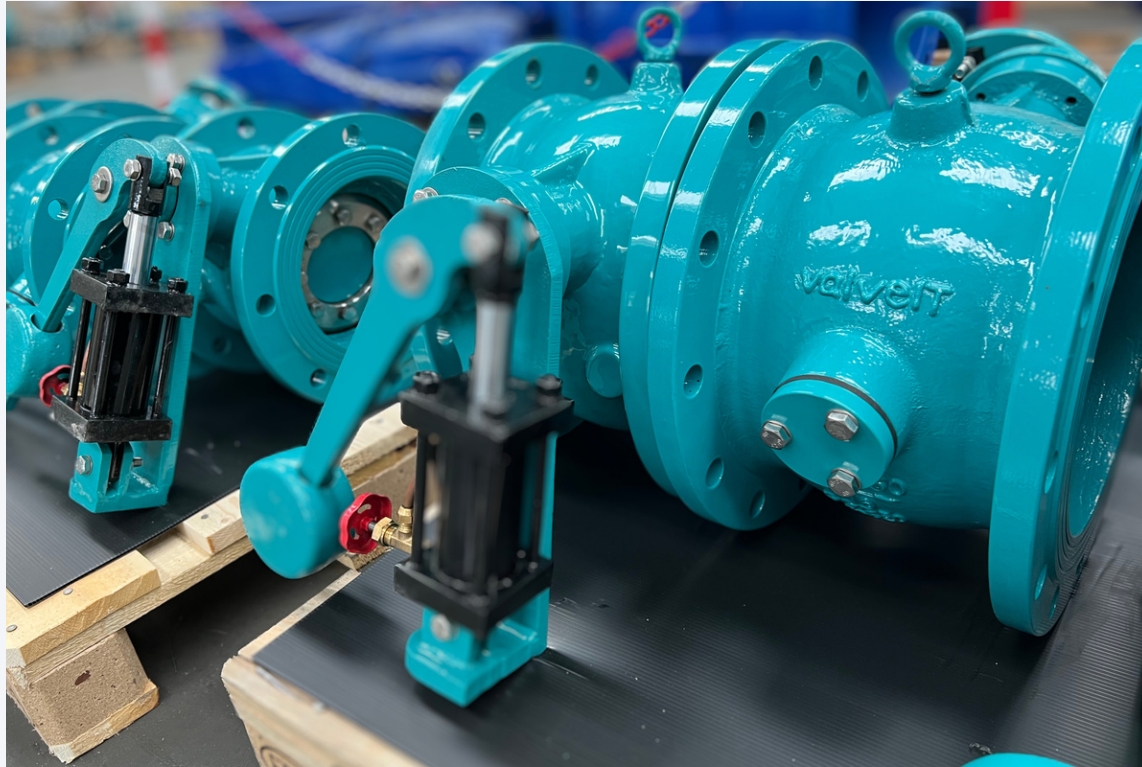
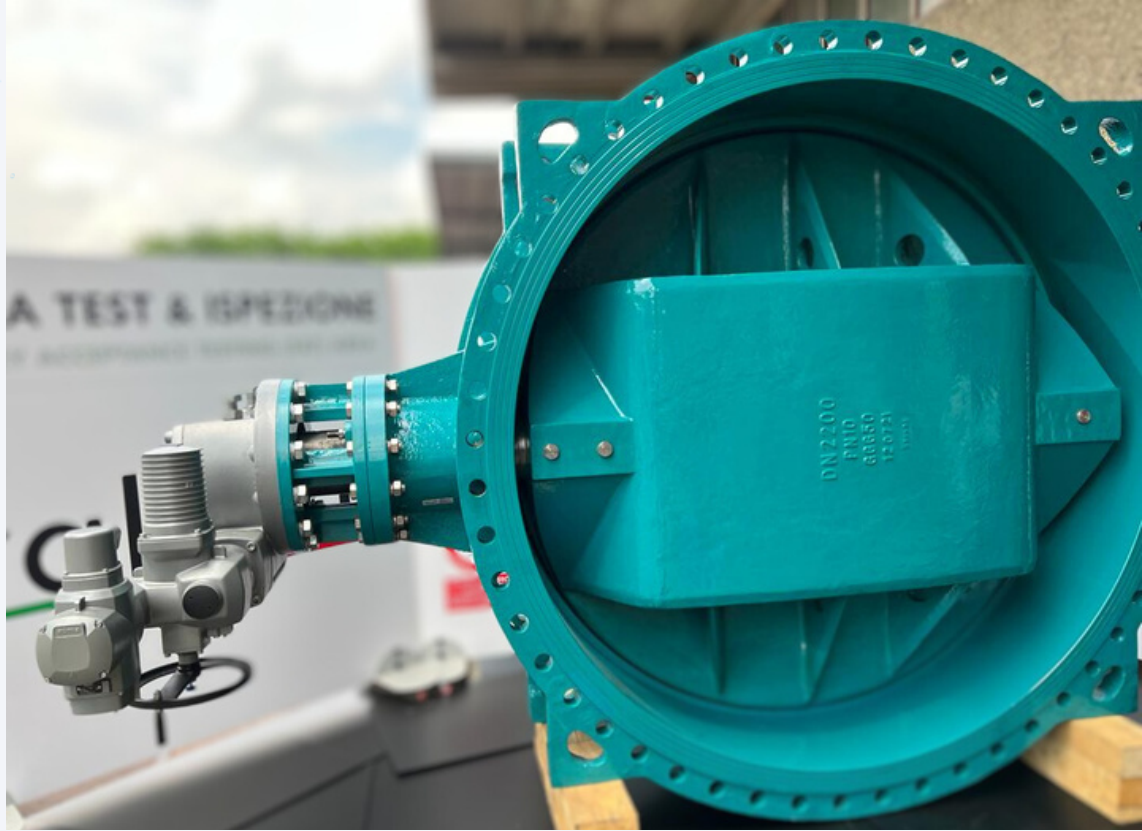
Location: Egypt

Plant Type: Agricultural Wastewater Treatment Plant

End User: Government of Egypt

The wastewater treatment plant has a capacity of 7.5 million m³/day, the largest of its type in the world and the treated water will irrigate up to 2,266,000 acres west of the Nile Delta area. The plant will receive the wastewater gathered in the north of Delta from the agricultural drainage, through digging a 120 kilometers pathway connecting the two points.





EPC CONTRACTOR

METITO
THE ARAB CONTRACTORS
ORASCOM
HASSAN ALLAM

METITO



ORASCOM
CONSTRUCTION

HASSAN ALLAM
HOLDING

CONSULTANT

KHATIB & ALAMI



END-USER

GOVERNMENT OF EGYPT
(WATER DEPARTMENT)

