



valveIT®

Via Caduti di Reggio Emilia 27, 40033
Casalecchio di Reno (BO)
www.valveit.com
info@valveit.com




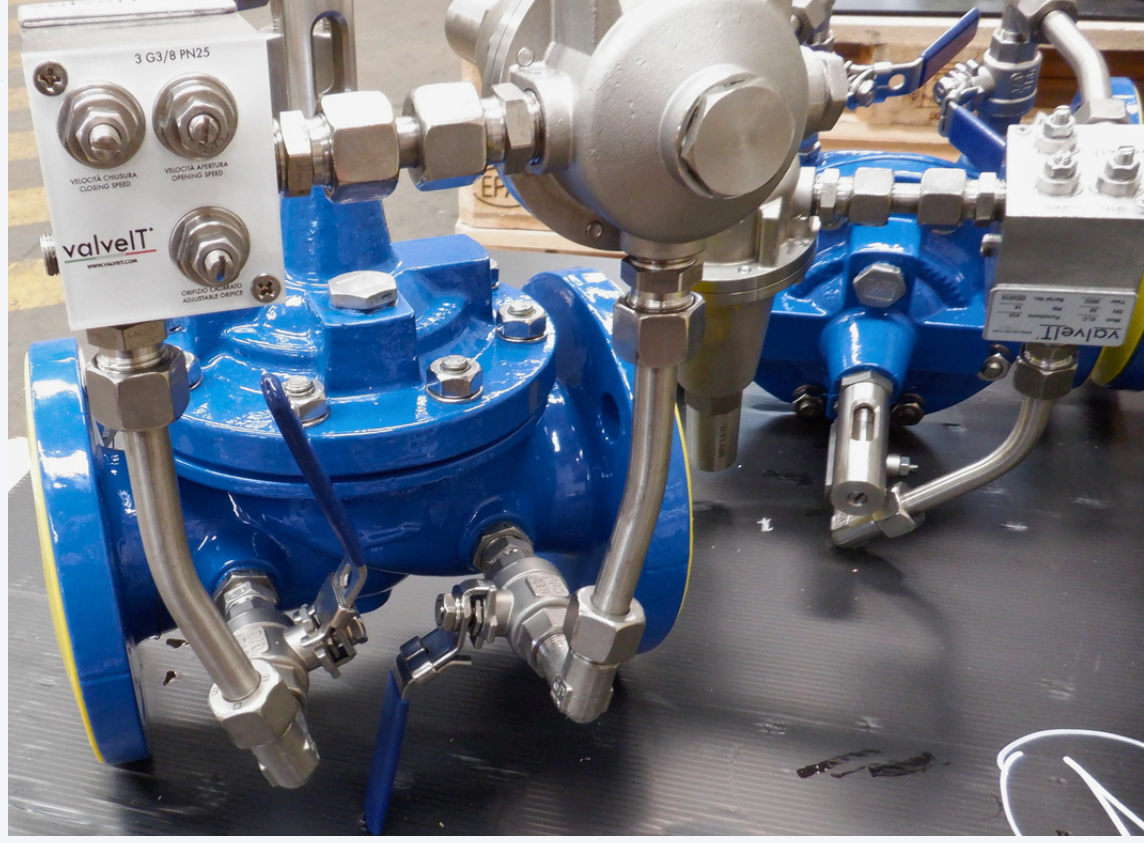
Location: Qatar

Plant Type: Sewage Treatment Plant

End User: Barwa

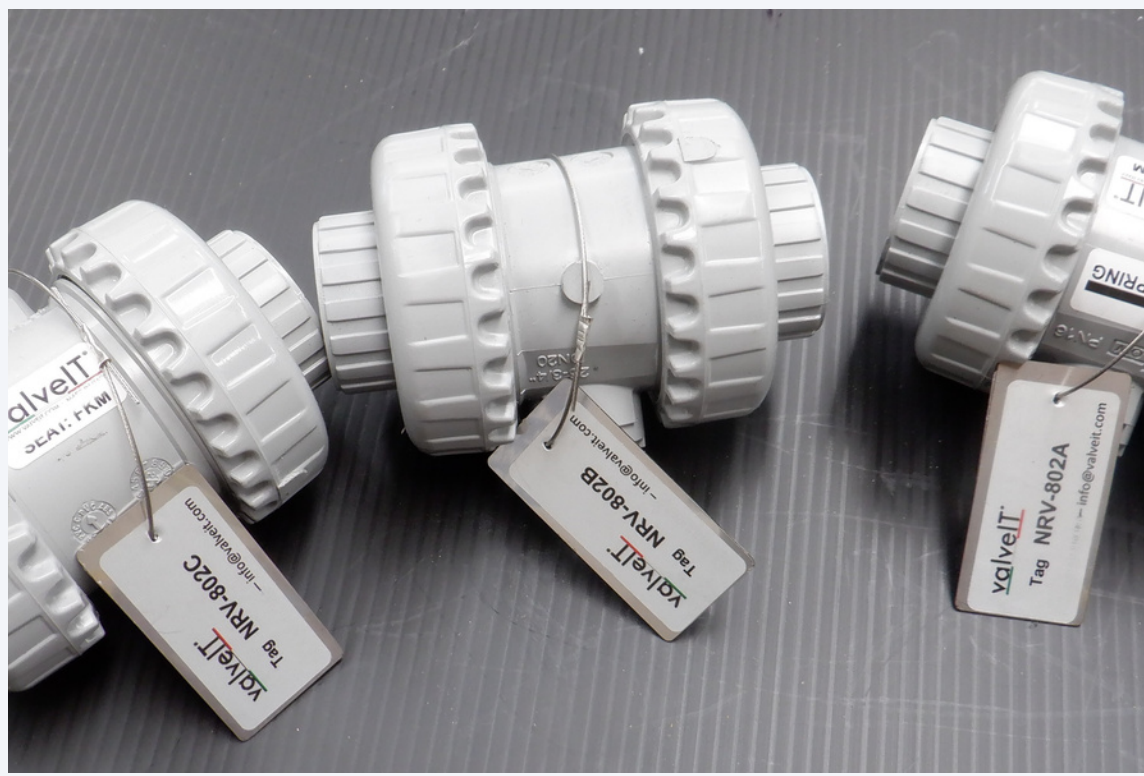
The project involves the construction of the Sewage Treatment Plants for the Labor Accomodations complex & Family Housing complex built in Madinatna city (Al Wakra District). The project has a total built-up area (BUA) of 1,038,654 square meters and has 166,481 square meters of green area and 714,249 square meters Driveway/Walkway/ Parking area. The development also comprises of amenities such as Hypermarket, Central Retail, Kindergartens, Main Clubhouse, Warehouse, Primary Substation & Waseef Building.





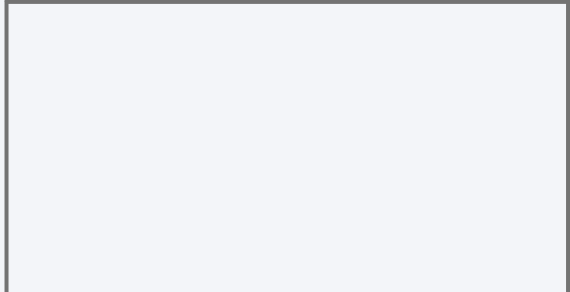
EPC CONTRACTOR

METITO



CONSULTANT

-



END-USER

BARWA

